



AIA | DC news

WASHINGTON CHAPTER AMERICAN INSTITUTE OF ARCHITECTS



Images Courtesy of Robert McComas

Hickok Cole Pays Tribute to 9-11



EDITOR'S CORNER

AIA|DC News is published monthly on the 15th day of the month (except in September and January) by the Washington Chapter of the American Institute of Architects and is distributed to over 2,000 AIA|DC members and corporate and professional affiliates in the Washington, DC metropolitan area. The News is printed on Rolland Enviro 100, a 100% post-consumer waste paper.

The editorial deadline for each issue is the seventh day of the preceding month. Submissions received after this date may be held for publishing due to spatial limitations. Editorial contributions and letters are welcome. We reserve the right to edit submissions. Opinions expressed by contributing authors do not necessarily reflect the policies or views of the Washington Chapter/AIA, or its officers, directors, or employees.

EDITOR

Scott Sowers
Scott@ScottSowers.com

MEMBER NEWS ITEMS

www.aiadc.com/article.asp

AIA|DC 2009 OFFICERS

David Daileda, FAIA
President

Steven Spurlock, AIA
Vice President/President-elect

Yolanda Cole, AIA
Treasurer

Jon Penndorf, AIA, LEED@AP
Secretary

Barbara Laurie, AIA
Past President

AIA|DC STAFF

Mary Fitch, AICP, Hon. AIA
Executive Director

Melody Harrison
Membership Manager

Abby Davis
Operations Manager

Beth Judy
Foundation Program Manager

Sarah Smith
Education and Events Manager

ADVERTISING SALES MANAGER

Jody Cranford 800-501-9571 x 138
jody.cranford@theYGSgroup.com

Hello everybody and I hope you're living one of my favorite fantasies, which is taking the entire month of August off and going somewhere fabulous. Unfortunately this concept remains a fantasy for me so let's go to the News. August and September brings thoughts of going back to school and education, which just happens to be our theme for the month.

I was looking for a shot of a beautifully designed school for the cover but in this month's pile, I found a jaw dropping image of a 9/11 memorial (with an educational component) designed by the talented folks at Hickok Cole. Our affiliate of the month is the International Masonry Institute, a well-known educator of crafts people and architects. AIA |DC Education Czar Sarah Smith answers some timely questions about Learning Units and Bowa Builders provides some education on a rebate program for green building in Vendor News.

One of my favorite aspects of working with the design community is, well, looking at the pictures. Last month, photographer Boris Feldblyum sent me some pictures he liked. I couldn't figure out what to do with them but it gave me an idea. I asked him to pick one of his favorite shots and write a short piece on why he likes it. It's rather educational and I'm now inviting all the other shooters out there to send me one image that looks good in black and white and tell me what you like about it.

If you didn't make it down to DesignDC, you missed a good one. The new digs at the Convention Center provided a setting that kept everybody engaged and enlivened. As always, the Calendar and Member News has been updated; we're also enclosing a wrap-up of the Unbuilt Design Awards. Keep in mind that we don't publish in September, even though Architecture Week will be in full swing. See you in October.



Scott Sowers




ABOUT THE COVER

Eight years after the September 11, 2001 attack that crippled Washington, DC, large corporations who lost employees have made a pledge to remember the fallen. At the entrance plaza of the Northrop Grumman Information Technology headquarters in McLean, Virginia, Hickok Cole Architect's monument to employee Julian Cooper and the attack on the Pentagon quietly symbolizes a company that remembers.

At Hickok Cole Architects, the emotional design process started with a collaborative firm-wide charette competition. The project prompted young architects to contemplate the endurance of public memorials and consider the impact of their piece in 50 years. This final design ultimately included a hybrid of their two designs: a polished black granite memorial wall dedicated to the September 11th victims and a configuration of three circular granite benches and trees symbolizing the three September 11th sites. The memorial operates as a time-stamp, interacting with the sun on September 11th, marking the moment of the Pentagon attack as the sun rises and falls that day.

Avitecture®
the integration of a-v systems with architecture and IT.



- € Design - Build
- € Integration
- € Technology Refresh
- € Service and Support
- € Manual and Motorized Window Treatments
- € Lighting Control
- € Digital Signage

Avitecture
AV WASHINGTON

Avitecture, Inc.
1 Export Drive
Sterling, VA 20164
tel: 703.404.8900
www.avitecture.com



Grace Period for Learning Units Coming to an End – Where Do You Stand? Ask Sarah !

by Sarah Smith



Sarah Smith

August finds a slumbering DC, and shortly there after, the steady crescendo to fall begins. Around these parts, the end of summer also means the end of AIA’s grace period for earning, submitting, and tallying learning units for 2008 (yup, you read that right—2008. Remember, members have until September 30th of any given year to complete the previous calendar year’s requirement.)

Architect: Wait, what’s the requirement?

SS: AIA members must complete a total of 18 learning units (LU’s) per calendar year. Eight of the total 18 LU’s must be earned by attending Health, Safety and Welfare (HSW) seminars. And four of those eight HSW credits must fall under the Sustainable Design (SD) designation.

Architect: But have I met the requirement? How do I know?

SS: Never fear, it’s easy to find out! A link from the ‘Education’ page on our website will take you directly to AIA National’s Continuing Education System. Here, you need only enter your AIA member number, and voila: Class titles, dates, and learning units earned will appear!

Architect: Uh, oh. I didn’t meet the requirement...

SS: Remember, you still have until September 30th to earn and submit learning units. But after that, AIA will crack the whip. To be eligible to renew your membership, you must begin reinstatement. Earning nine additional learning units, regardless of the number of units you’re short, is the only way to re-join.

Architect: So how can I earn a few more learning units before the end of September?

SS: Glad you asked—there are lots of ways!

August 26th: Join us for a ‘LEED for Homes’ Seminar worth 2.5 SD/HSW units

September 8th: LEEDTeacher will host an 8-hour seminar for those interested in becoming a LEED Green Associate

September 10th – 21st: ARCHITECTURE WEEK offers several opportunities to earn learning units. Tours, dinners, and panel discussions, oh my! Take a look at our calendar at www.aiadc.com for more information.



RENDERINGS
ILLUSTRATIONS
SCALE MODELS
ANIMATIONS
INTERACTIVE MEDIA

vertigovisual

t. (202) 265-3684
www.vertigovisual.com



Affiliate Profile: IMI

The International Masonry Institute educates craftspeople in every aspect of stone work but it also provides training to architects with help from Maria Viteri AIA, LEED AP, who serves the organization as the Director of Sustainability and Program Development. Local firms may be familiar with Masonry Camp, a two week program run every year by the IMI that pairs designers with crafts people in hands-on design projects.

“Besides Camp, on the education side we’re doing lots of green learning through local seminars, lunch-box sessions, and conferences,” says Viteri, “we’ve recently done AIA accredited programs in Pittsburgh, Minnesota, New Jersey and Pittsburgh.” The big buzz-word in the stone business right now is the same as everywhere else – green. “What’s interesting to me is we’re now looking at the green aspect in the same fundamental ways we looked at sustainable design twenty or thirty years ago,” says Viteri.

Good design doesn’t go away as Viteri takes a holistic approach to the message she spreads for the IMI. “We can now talk about how the outside of the building impacts what’s inside the building,” she says, “it’s an integrated way of design thinking.” IMI works out of offices in Annapolis and the state-of-the-art Flynn Training center in Bowie. To get the lowdown



Image Courtesy of IMI

Maria Viteri teaches at IMI’s “Masonry Camp”

on all the programs that the institute is participating in, check out their website at <http://www.imiweb.org>. If you have a specific question about the green qualities of masonry contact Maria directly at MViteri@imiweb.org

Possibility.

In today's design world innovation is not only profitable, it's necessary. By combining Architects and Engineers with tech-savvy professionals, we are able to solve problems in unique and innovative ways. Whether you own and manage busy commercial spaces, design million dollar homes or oversee the complexities of integrating green design, we know that technology should help an idea evolve as smoothly and fully as possible. So we offer a complete range of the world's leading Building Information Modeling, Facilities Management, GIS and CAD software solutions, consulting, training and support, fit precisely to your needs. We want to help you deliver more and more value to your clients. Because working with Microdesk means working as partners, it means you can count on results. And plan for inspiration.

800.336.DESK • www.microdesk.com Autodesk Google 

 **MICRODESK**



HORIZON BUILDERS
is proud to announce
being named the
2009
BUILDER OF THE YEAR
by Custom Home Magazine



H O R I Z O N
B U I L D E R S
— SINCE 1982 —

Thanks to those who share in the commitment to extreme craftsmanship and who expect nothing more than excellent service, Horizon is the first builder in the mid-Atlantic region to receive this national recognition.
800. 726. 4876 • www.HorizonBuildersInc.net

EXTREME CRAFTSMANSHIP



EXCEPTIONAL SERVICE



Photographer's Corner

by Boris Feldblyum

Sometimes we are lucky to be in the right spot at the right moment and come out with a great picture. Most often however, a photo shoot requires long and meticulous planning, especially in urban settings.

This simple and elegant H street building faces North, hence it gets the sun for a short time right after sunrise and just before the sunset, and only in the summer. Being concerned about missing the "magic moment", I arrived too early and had plenty of time to study the building as it looked back at me.

Right after being finished and cleaned, with no tenants yet, it seemed transparent, its structure revealed. The grid lines of the framework—so functional in their purpose—created an ornament, without being purposely ornamental.

After awhile, the ornament resembled the grid of Washington streets in my mind, and then the American flag. Being squeezed by its heavy-set neighbors on the left and on the right, the building looks small and graceful, despite its nine floors.

I have not asked the architect, Eric Colbert, what drove this specific design approach and was now free to imagine it with two more floors on top - deliberately disproportionate and reminding us of other cities where skyscrapers are allowed.

As the tenants move in, each floor will become a stage set for another little Washington, DC drama, or a comedy, with its actors proclaiming, "I am two blocks away from the White House! I am important!"

But for now, the building is the only character in this picture. As the grid lines become awash in sunlight and the glass plates change colors, it steps out of the shadows. The image is captured, and the day is ending...

Having landed in Washington this month 30 years ago, Boris Feldblyum still finds inspiration in local brick and mortar, which is increasingly refreshed by frame and glass. He is most happy when his work helps clients achieve their goals. Visual contact: www.bfcollection.net/. Human voice: 301-424-2654.



Image courtesy of Boris Feldblyum

1510 H Street NW by Eric Colbert & Associates



AIA | DC is proud to announce the winners of the our very first Washington UNBUILT Competition. Winners received certificates and accolades at the DesignDC opening reception last week. Congratulations to all. Please logon to the Chapter's Facebook page to see many of winning entries.

Grand Prize
STUDIOS Architecture
Kingman Island Environmental Education Center

Honor Awards
CORE with HMA2
Mount Pleasant Branch Neighborhood Library

Cunningham | Quill Architects
Takoma Walk

Dynerman Architects PC
Georgetown University: Calcagnini Contemplative Center Chapel

Smithgroup
Neural & Behavioral Sciences Building

Hickok Cole Architects
16th and Constitution Avenue, NE

Merit Awards
Landscape Architecture Bureau Half Street, SE



KGP Design Studio
Tysons Tunnel Stations

Lee + Papa and Associates
Cultivating the Edge

McInturff Architects
Washington Ballet

Geier Brown Renfrow Architects
German School Science Building

Studio27Architecture
Reconceptualizing Southwest DC

Bonstra | Haresign ARCHITECTS
3509 Fourteenth Street

Engineering Services

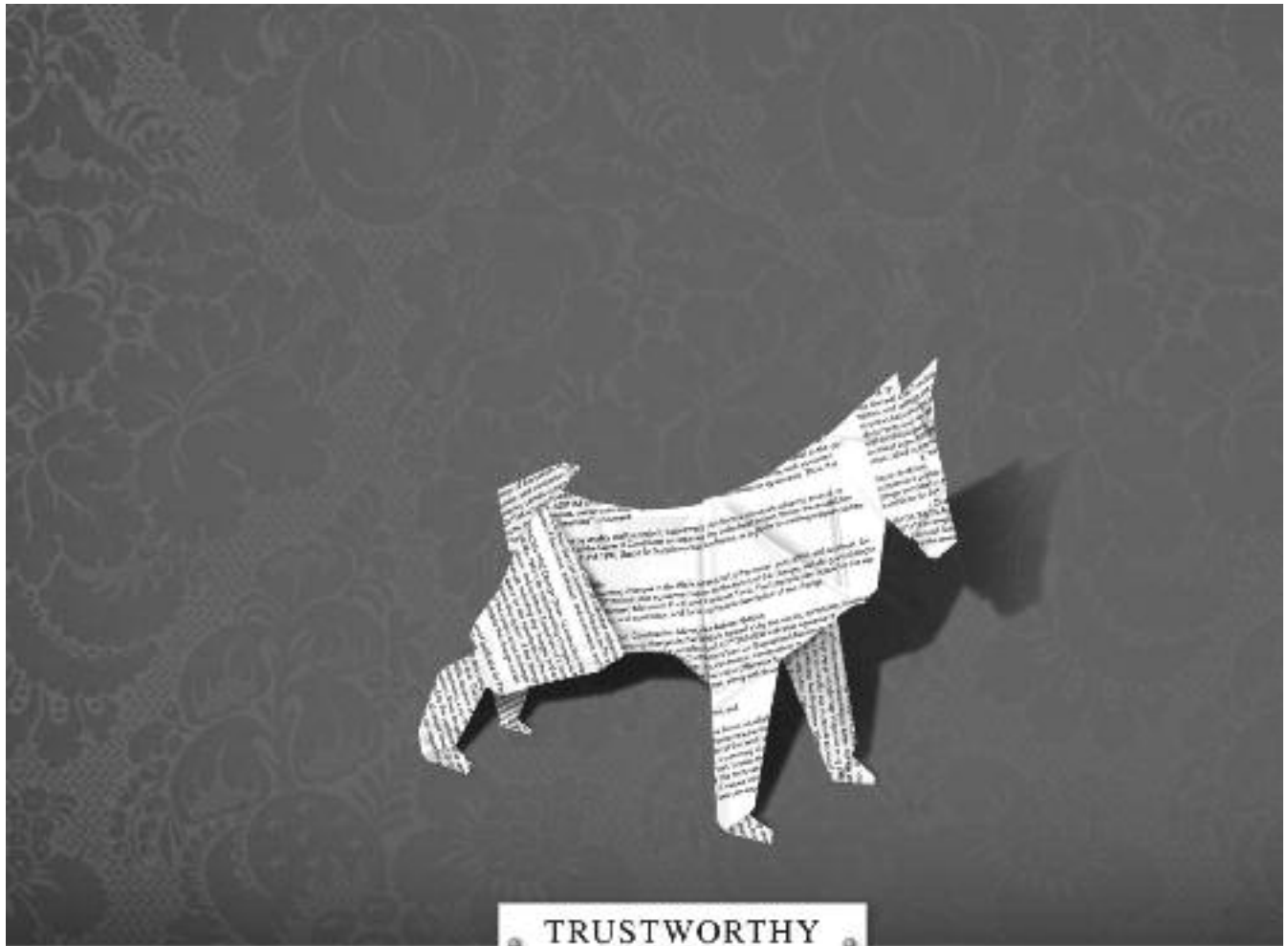
Mechanical Engineering	Structural Engineering
Electrical Engineering	Civil Engineering
Plumbing Design	Facilities Documentation
Fire Protection Design	Asset Management

*Celebrating over 40 years of Engineering Excellence
Over 1,000 Employees in over 20 Offices Nationwide
USGBC Member—LEED Accredited Professionals on Staff
Ranked among ENR's Top 100 Design Firms*

Employment Opportunities Available

GPI Greenman-Pedersen, Inc.
Engineering and Construction Services

7650 Standish Place T 240.268.1820
Suite 109 F 240.268.1821
Rockville, MD 20855 E lp@gpinet.com
www.gpinet.com



TRUSTWORTHY
~SINCE 1888~

AIA Contract Documents, the industry standard for 120 years, is the most trusted source for your contract needs.

AIA Contract Documents are the most **widely accepted** and understood in the industry. The 2007 update of AIA's most frequently used agreements is available in a variety of **easy-to-use** electronic and paper formats. The **intuitive, Microsoft® Word-based** software option gives you the most **trusted, comprehensive** suite of editable documents available. To find out more, visit us online at www.aiacontractdocuments.org/architect.

AIA Contract Documents®
THE INDUSTRY STANDARD.
2007 Update



Doug Horgan of BOWA Builders

BOWA Builders Serves as Valuable Green Building Resource for Area Architects

Over the past 20 years, BOWA Builders has collaborated with some of the area's foremost architects to bring hundreds of mid- to large-sized residential renovations to life. Behind the success of each project, has been BOWA's commitment to

staying true to the architect's vision while delivering unmatched craftsmanship, accountability and service. The more complex projects have also benefitted from the expertise the team contributes to the project planning phase. Green remodeling is just one of the areas in which BOWA can serve as a valuable resource due to their in-depth knowledge and experience.

According to the National Association of the Remodeling Industry, "Green remodeling is an all-encompassing approach that emphasizes making a home healthy, comfortable and efficient." Achieving a green home, however, is not a simple matter. It requires a complex formula consisting of quality materials, sound design and construction practices, a thorough understanding of how the home's systems interrelate and numerous other variables.

"BOWA Builders' commitment to producing the highest quality renovations for our clients, has resulted in our using what have come to be known as environmentally conscious materials and practices for more than a decade," said Doug Horgan, vice president at BOWA. "As industry studies show that retrofitting existing homes with energy-efficient features is four to eight times more effective than incremental improvements to newly constructed homes, we're pleased to be able to draw on this experience to help educate homeowners and fellow professionals on the benefits of green building and remodeling."

With more than 20 years experience in residential remodeling and numerous industry certifications, Horgan is recognized as one of the area's foremost authorities on green remodeling and construction quality. Horgan applies this knowledge to his role as BOWA's Vice President of Best Practices, where he champions the company's standard of excellence through research and development, training and quality control programs.

Given the complex nature of many of BOWA's large-scale renovations, Doug often works with the design team to address challenges and develop effective solutions during the project's planning phase. And, of course, Horgan advises on each of BOWA's green building projects.

An active participant in the industry's dialogue on green remodeling, Horgan is a member of the Washington Chapter of the American Institute of Architects' Committee on the Environment (COTE_{dc}) and one of the first residential construction professionals in the country to acquire the new LEED AP Homes certification. Doug is an NAHB Certified Graduate Remodeler, and was the first person in the Washington area to achieve the NAHB's Certified Green Professional designation.

He also carries certifications from the Building Performance Institute, is a NARI Green Certified Professional, and was an instructor for the NARI Green Remodeling class. As a result of his training, experience and involvement Horgan has been invited by various industry groups, architectural firms and homeowners to speak on various aspects of green building and construction quality. For groups, such as COTE_{dc}, ASID and Custom Design Concepts, Horgan was able to develop informative programs tailored to the audience, venue and topic of interest.

Building on Horgan's expertise and BOWA's longstanding commitment to environmentally responsible building, the company recently introduced a first-of-its-kind green rebate program, called the BOWA Environmental Incentive Program. The innovative program helps clients "go green" by rewarding those who elect BOWA-recommended environmental upgrades for their 2009 construction projects by rebating the company's fee on up to \$100,000 in related costs.

Eligible upgrades include those that go beyond their already-high standards for things like insulation, windows or HVAC systems, as well as green design services; alternative energy systems, such as solar or wind; and more environmentally conscious upgrades. The program is already generating tremendous interest among clients, architects, and the media.

"Our new BOWA Environmental Incentive Program puts our money where our mouth is when it comes to helping to protect the environment," said Larry Weinberg, chief executive officer of BOWA Builders. "We are pleased to be able to serve area architects as both a knowledgeable resource and experienced partner, while offering their clients this valuable incentive designed to encourage the use of even higher-performance materials."

Serving the Greater Washington area from its offices in McLean and Middleburg, Va., BOWA Builders is a full-service residential construction firm specializing in upscale additions, renovations and custom homes, as well as project planning and feasibility. BOWA has a solid history of working in partnership with architects to exceed client expectations. Their award-winning team, consultative process, schedule guarantee and extended warranty all contribute to a unique approach designed to ensure the client's peace of mind and complete satisfaction.

To discuss how BOWA may be of assistance on your next project or to explore a customized presentation on any facet of green building or construction, call 703-734-9050 or visit www.bowa.com.



A

Tony Janezich and Stan Andrulis are pleased to announce that their young firm **AJArchitects**, won the 2009 Hospital Design Competition Merit Award for excellence in veterinary hospital design for the Animal Clinic of Sterling Heights, Michigan. Over the past 44 years the Veterinary Economics Hospital Design Competition has recognized exceptional veterinary facilities that enhance pet owners' experiences at the hospital, support top-notch veterinary care, maximize practice efficiency, and foster comfortable working conditions for veterinarians and veterinary team members. These award-winning facilities set the standard for cutting-edge veterinary hospital design. The project was designed by Stan Andrulis and Chris Christian. Other animal care projects designed by AJArchitects are: Palisades Veterinary Clinic, and Union Veterinary Clinic both in Washington, DC; Dryden Veterinary Hospital in Dryden, Michigan; and the Washington Animal Rescue League Adoption Renovation, Addition and Garden in collaboration with Richard Giegengack

B

Balfour Beatty Construction used a winning combination to achieve success on the Food and Drug Administration's (FDA) Center for Devices and Radiological Health (CDRH) Office Building: adopting a "do what is best for the project" mentality and maintaining a sense of urgency in the schedule. The result was substantial completion of construction three months early for the \$93.7 million, 393,000 square foot facility at the FDA campus in Silver Spring, Md.

Throughout the project, Balfour Beatty provided the highest level of service to its clients, the General Services Administration (GSA) and the FDA. This included helping lead the effort to go beyond the LEED Certified sustainability requirements to meet the tougher, LEED Gold criteria.

The six-story, concrete-framed project is built to progressive collapse specifications. Its exterior is made of brick, cast stone and curtain wall. Steel pedestrian bridges on the second and third floors link the building to adjacent laboratory facilities. Besides office areas, the interior features a 150-person conference center and high-density storage space. The building's centerpiece is a grand, six-story atrium that runs the length of the building, with clerestory windows above providing abundant daylight.

Balfour Beatty provided general construction services on this project. Other members of the CDRH project team included Tishman Construction Corp. of Maryland, construction manager; KlingStubbins in association with RTKL Associates, architecture and engineering designers; Dynalectric Company, electrical subcontractor; Pierce Associates, mechanical subcontractor; Miller & Long Company, concrete subcontractor; Tidewater Glazing, glass and glazing subcontractor; and Manganaro Midatlantic, drywall subcontractor.

The CDRH Office Building is the third project Balfour Beatty has completed since 2004 at the FDA's Silver Spring campus. Balfour Beatty also built the \$89.2 million, 573,261-square-foot Center for Drug Evaluation and Research Office Building, and the \$42

A proven builder to implement your vision

- award-winning results
- superior craftsmanship
- consultative process
- a better experience

BOWA Builders, Inc.

discover the difference

Metro Area: 703-734-9050
Middleburg: 540-687-6771
www.bowa.com

Additions & Renovations • Custom Homes • Purchase Consultations • Planning & Feasibility

BOWA's team of professionals has the expertise necessary to implement your vision. Our commitment to craftsmanship, integrity, and open communication contribute to superior results and a better experience for you and your clients. Let BOWA bring your project to life.



million, 123,000 square foot Central Shared Use Building, which houses administrative functions.

Bonstra | Haresign ARCHITECTS is pleased to announce that Hello Cupcake has been recognized in the 2009 Northern Virginia Chapter AIA Design Awards for exemplary Interior Architecture. Hello Cupcake is a gourmet cupcake bakery located in DC's Dupont Circle neighborhood. The unique retail design reinforces the store's concept, A Sophisticated Twist on an Old Fashioned Classic, using a colorful palette of sustainable materials to create a backdrop for the display of the delightful products. Congratulations to our client Penny Karas (who is also Bill Bonstra's wife), our team of talented architects, and our consultants.

Harry T. Gordon, FAIA, Chairman, **Burt Hill**, announced today that Rick Lipinski has been promoted to Chief Information Officer (CIO). Lipinski has been with Burt Hill for two years and has been acting CIO for the past five months. Lipinski has a bachelor of science degree in computer technology from Youngstown State University and brings twenty-five years of experience in information technology to the firm.

F **FOX Architects** earned a LEED Commercial Interiors (CI) Gold rating from the United States Green Building Council (USGBC) for the firm's DC office, located at 1121 14th Street, NW in Washington, DC. The project is one of only 18 Gold projects in Washington, DC. FOX also received the International Interior Design Associate (IIDA) Gold Award (design) and Special Merit Award (Sustainability) for the project. Along with FOX, the project team also included GHT Limited and rand* construction, who all committed to a sustainable design strategy in the conceptual stages of the project.

In other news, the recently completed building at 1129 20th Street ushers in a new standard for sustainable architecture. The project is located in the heart of Washington, DC's central business district. The original eight-story structure was built in 1968 and had no significant upgrades since its construction. It originally contained 136,000 gross square feet and two levels of underground parking. FOX Architects was able to increase the building in height two floors, which increased the size of the building by 45,000 square feet. A new façade and new building systems have been woven through the existing structure. The building's LEED-New Construction certification is pending. Based on the points total as of the completion of construction, the building will be certified at a Gold level.

J Washington, D.C.'s most acclaimed international architect is marking 50 years of practice is partnering with his son, Simon Jacobsen. The new company, which will be called "**Jacobsen Architecture, LLC**" will continue to operate out of its Georgetown office where they have been located since 1958. Hugh Jacobsen, who has built over 150 projects in Washington, DC and whose practice has expanded to

designing projects in Europe, The Caribbean, Africa, The U.S. and Canada, has won over 120 awards including 6 prestigious American Institute of Architect's National Honor Awards. Hugh Jacobsen has been named in the last several years to Architectural Digest's "AD100" list; a group the design magazine considers the top 100 designers in the world. Simon Jacobsen, 43, has worked for his father since he was 13, and for 15 years professionally. Simon and Hugh Jacobsen have collaborated on many projects throughout the years, have been published nationally and internationally and have won awards and accolades for their work together in residential and commercial architecture, interiors, and graphic design. The younger Jacobsen is a Washington native and attended the University of Illinois-Chicago School of Architecture where he received the degree of Masters of Architecture. The firm officially takes its new name and corporate structure on July 1st, 2009.

K **Karn Charuhas Chapman & Twohey (KCCT)** wins the renovation of the Residence and Chancery of the former Ambassador of Spain, located on 16th Street in Washington, DC. This Residence and Chancery will be converted into a cultural center, the Spain / U.S. House. The original building, constructed in the 1920's, intended as a residence for the Vice President of the United States was later sold to the Embassy of Spain.

The design for the Spain / U.S. House will encompass a state of the art cultural center that supports and promotes Spanish culture through events such as exhibitions, lectures

KH KEAST & HOOD CO.
Structural Engineers

New Construction • Renovation • Addition • Adaptive Reuse
Historic Preservation • Masonry Stabilization • Structural Intervention

1850 M Street, NW, Suite 510
Washington, DC 20036
202.223.1541

www.keasthood.com
President/PA | Washington



Spanish U.S. House and Cultural Center by KCCT

and live productions. The Center (old residence portion of the project) will have 30,000 square foot of open interior spaces that will contain main exhibition spaces and a kitchen/café on the ground level, with office space and a media resource center on the first floor. The separate Chancery building will house a black box theater on the first floor for live theater and concerts, with the upper floors containing additional office space. The KCCT team includes, Principal Designer, Enrique A. Bellini, AIA, EFI, Project Manager, E. Mitchell Buck, and Director of Interior Design, Jamie Leclerc, ASID, LEED AP.

KCCT also recently completed the renovation of the "Old State" building for the Department of the State.



Modernization of the Department of State by KCCT

The Department of State and the General Services Administration consider this project a model for public building in the Washington area. The 470,000 square feet renovation included historic lobbies and various offices restored to their original condition. KCCT added 200,000 square feet of new office space, a new conference center, and a 250 seat auditorium (including interpretation booths). Special preservation features of the modernization included the refurbishment of all original brass lighting fixtures, and the restoration of wood paneling treatment in the historic office of the former Secretary of State, George C. Marshall. The KCCT team includes, Principal Designer, Enrique A. Bellini, AIA, EFI, Project Manager, E. Mitchell Buck and

Image courtesy of Hoachlander Davis Photography



**Retail
Restaurant
Office
And
Government**

Since 1994




Construction + Consulting, Inc.



"I'd like to thank everyone who stopped by our booth at Design DC. The show was a great success, and we welcome the new business relationships we formed."

Ozzie Yazgan, President & Founder

- ◆ Specialist in base buildings, build outs, & renovations of restaurants, retail store build outs, and interior spaces
- ◆ Quality results on time and within budget
- ◆ Personal commitment to each job and every client

Great Falls, Virginia
Phone 703.261.6663 ◆ Fax 703.268.5392

ITEKConstruction.com



Director of Interior Design,
Jamie Leclerc, ASID, LEED AP.

Catholic University of America invited **Christopher Peoples, AIA**, Associate from KCCT Architects to be a guest professor for a comprehensive design studio at the School of Architecture and Planning. Working with groups of students set up in "firms", Peoples led teams to complete a zoning and land study for a transit hub for the new DC streetcar program. He led two teams to become finalists that will present their findings to DDOT. Previous experience lecturing for the School of Architecture include courses on Experiences in Architecture.



Christopher Peoples
of KCCT Architects

Keast & Hood Co. continued its commitment to preserving the Thomas Point Shoal Lighthouse by recently participating in a volunteer work day. Ten staff members from Keast & Hood's DC and Philadelphia offices spent the day at the lighthouse, completing repairs and preservation maintenance. The volunteer activity is part of an ongoing relationship with Thomas Point and the US Lighthouse Society, for which Keast & Hood Co. has provided professional and pro bono preservation efforts since 2006.

The Thomas Point Shoal Lighthouse is the oldest, unmoved, spider-type screwpile lighthouse in the US.

Built in 1875 as a replacement for an on-shore tower, the light is located in the middle of Maryland's Chesapeake Bay. Its iron foundation and structure were rehabilitated and strengthened by Keast & Hood Co. and Structural Preservation Systems, LLC during a design-build project in 2006-7. Since then, additional corrective measures have been taken and Keast & Hood Co. staff has offered volunteer service for ongoing maintenance and repair work.



The Mid-Atlantic Precast Association (MAPA) has named a panel of judges for Design 09, its new awards competition. The industry group established Design 09 to showcase innovative and effective use of precast concrete in the mid-Atlantic region. Design 09 includes two separate competitions: one for professional architects and one for students. Nominated projects must make significant use of precast concrete, must have been completed or conceived within the past five years and must be located in one of the states served by MAPA.

Anyone may nominate a project and there is no cost to make a nomination, but all nominations must be received by Friday, September 4, 2009. To learn more details, review a complete list of categories, or use the simple online nomination process, visit www.mapaprecast.org. Design 09 honorees will be selected by the judges during September and will be announced in October.

cmi
CADD Microsystems, Inc.

The leading Autodesk provider in the D.C. Metro area for more than 23 years. Since its inception, CADD Microsystems has focused on helping local Architecture, Engineering and Construction firms automate their AutoCAD process. As both the industry and our clients evolve, so does CMI, and we are proud to be the area leader in helping firms transition to BIM.

Contact CMI at 800.550.CADD or go to www.caddmicro.com to learn more about how we can help you make this transition seamlessly and successfully.

BIM consulting | Training | Standards development | Implementation

Autodesk
Premier Solutions Provider
Building Architecture
Civil Engineering
Federal Government
State & Local Government



P The Board of Directors of international architecture and design firm **Perkins Eastman** is pleased to announce recent senior-level promotions in the Arlington, VA office. The promotions occur annually and reflect the company's commitment to building and maintaining a strong and dynamic management team across its many practice areas, multiple offices, and affiliates. The firm recently celebrated 36 promotions firm-wide.

Omar T. Calderon, AIA promoted to Associate Principal: Calderon has more than 15 years of experience as a highly versatile senior designer, working on a wide variety of commercial, residential, higher education, and K-12 projects. Calderon is a Baltimore resident and a graduate of Columbia University and Iowa State University. He is a registered architect licensed in the States of New York and Maryland, and has served as a fellow for the New York Foundation for the Arts, National Endowment for the Arts, and the Graham Foundation for Advanced Studies in the Fine Arts.

PSA-Dewberry, a leading architectural and engineering practice based in Chicago, Illinois, has announced several promotions nationwide. The company, established in Illinois more than 50 years ago, has grown over the past year and now employs 270 professionals in seven offices in the midwestern and eastern United States. PSA-Dewberry is an affiliate of Dewberry, a 2,000-employee practice with more than 40 offices coast-to-coast providing services in

building design, infrastructure engineering, and management and consulting.

Jim Beight, PSA-Dewberry's director of design and director of courthouse design, has been promoted to senior principal. John M. Bisinger, a marketing and strategic planning director in PSA-Dewberry's Peoria office, has been promoted to principal. Brad Hall, a project manager in PSA-Dewberry's Peoria office, has been promoted to principal. Tim Kraft, LEED AP, PSA-Dewberry's architectural technology manager and sustainable building design manager, has been promoted to principal. Don Wertzberger, PSA-Dewberry's director of public safety architecture, has been promoted to principal. John Main, a project manager, has been promoted to associate principal. Mike Parrish, electrical engineering group leader for PSA-Dewberry's Peoria office, has been promoted to associate principal. Mark Scott, the office director for PSA-Dewberry's Fairfax office, has been promoted to associate principal. Geri Rademacher has joined the PSA-Dewberry Dallas office as a senior associate and director of business development. **Michael A. Thompson, AIA**, LEED AP, a registered architect in the Chicago office, has been promoted to associate. **Nathan E. Bossenga, AIA, PE**, a structural engineer in the Chicago office, has been promoted to associate. Eddie Davis, an interior architect with PSA-Dewberry, has been promoted to associate. **Brian T. Meade, AIA**, a senior project architect in the Chicago office, has been promoted to associate. **Douglas A. Pfeiffer, AIA**, a project architect specializing in library design in the Chicago office, has been promoted to associate.

THE TOP OF ITS CLASS

Potomac Valley Brick is the leading masonry products supplier in DC, MD, and Northern VA. We strive to provide you with the most prestigious options to ensure your next project will make an everlasting impression.

Corporate HQ & Sales
15810 Indianola Dr Ste 100
Rockville, MD 20855

web: www.PVBrick.com
email: info@pvbrick.com
phone: 301-309-9600

PVBR
Potomac Valley Brick



Architect: SBLM Architects
 Design Partner: Raza Ali
 Client: New York City School Construction Authority
 Completed: 2003

Burdick On Brick.

"Using brick as a building material allows a designer to create something that's both contemporary in form and timeless in beauty. The application of brick conjures up a 4,000 year memory in our collective subconscious."

—Joshua Burdick

Glen Oaks School campus is the biggest project awarded to date by the New York City School Construction Authority (NYCSA). Brick, including 100,000 special shapes, was used to cover more than 500,000 square feet of exterior and interior wall space.



Baltimore/Washington Brick Distributor Council

CAPITAL BRICK, INC.
 8315 Old Marlboro Pike
 Upper Marlboro, MD 20773
 301.420.8484
www.capitalbrick.com

FREDERICK BLOCK, BRICK & STONE
 1040 Martinsburg Pike
 Winchester, VA 22600
 540.667.1261
www.frederickblock.com

FREDERICK BRICK WORKS, INC.
 1731 Monocacy Blvd
 Frederick, MD 21701
 301.662.1153
www.frederickbrickworks.com

GENERAL SHALE BRICK
 34 Thomas Avenue
 Baltimore, MD 21225
 410.789.3700
www.generalshale.com

GLEN-GERY BRICK CENTER
 9901 Gerwin Drive
 Manassas, VA 20110
 703.368.2178
www.glengerybrick.com

L.C. SMITH, INC.
 5920 Farrington Ave
 Alexandria, VA 22304
 703.751.5420
www.lcsmithbrickinc.com

L & L SUPPLY CORPORATION
 Craghton Annex
 1404 Front Avenue
 Lutherville, MD 21093
 410.825.7800
www.lbrick.com

POTOMAC VALLEY BRICK AND SUPPLY COMPANY
 15810 Leebach Drive,
 Suite 11100
 Rockville, MD 20855
 301.309.9600
www.pvbrick.com



Clay Brick – The Most Sustainable Green Building Material Made.



S



Images Courtesy of Maxwell MacKenzie

The power plant addition is oriented along the north-south axis, giving primacy to South Capitol Street and its major view toward the U.S. Capitol building, reestablishing it as the monumental boulevard envisioned in the Legacy Plan.

SmithGroup in DC partnered with RMF Engineering and the Architect of the Capitol to expand the Capitol Power Plant's capacity and enhance the surrounding Capitol Hill neighborhood. The plant not only supports the capitol complex with vital cooling needs, but the project created green space by relocating industrial structures 160 feet away from South Capitol Street, helping to diminish their mass to pedestrians, and planting trees all around the perimeter's structure. In addition, a screen system was created to simultaneously buffer noise from the power plant and break down the massive scale of the building. "This is not a typical power plant. This is one that sits in the middle of the nation's capital, states David Greenbaum, FAIA, LEED AP, Vice President, SmithGroup. "We viewed this as an opportunity to explore how infrastructure projects can contribute to the fabric of the city and specifically improve the South Capitol Street Corridor."

WATERWAY

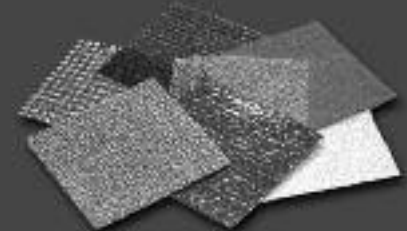
Rainscreen
Drainage Mats

Create Space Between Your
Building and the Elements



Benefits:

- Creates Space for Water Drainage
- Green Build - Adds 3 LEED Points
- 60 Million Feet in Service
- Testing, Specifications & Details
- Stucco, Siding, Stone



Stucc-O-Flex International, Inc.
1-800-305-1045 / www.stucoflex.com

HSMM, AECOM & DMJM
AECOM are now known as
AECOM Design. Building on
the legacies of both firms,
AECOM Design embodies
the concept of the whole
being greater than the sum
of its parts. Together, our
commitment to excellence
in planning, architecture,
interior design, engineering
and program & construction
management result in an
integrated, balanced, world-
class product.

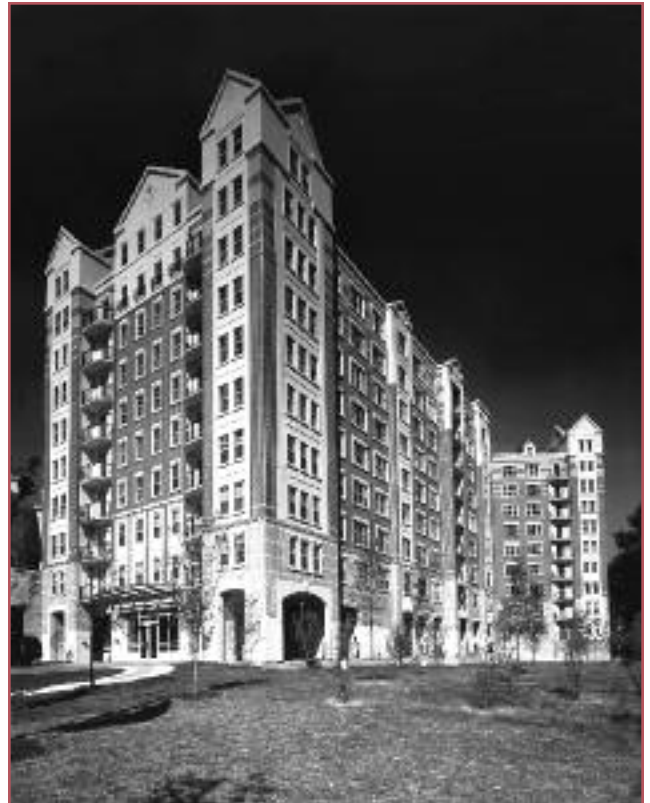
Local Offices:
3101 Wilson Boulevard, Suite 500
Arlington, VA 22201
703.887.4903
1185 21st Street, NW, Suite 1000
Washington, DC 20037
202.721.7703





Images Courtesy of Maxwell MacKenzie

To create a more delicately residential scaled presence on E Street, SmithGroup deliberately removed a section of the existing administration building to provide a view to the historic brick boiler plant.



Inigo Crossing by Smith Midland

WE FINISHED HIGH SCHOOL IN 5 MONTHS.



- Design, manufacture, and erection of 273,000-sq.ft. precast concrete high school in 20 weeks using two cranes, to replace previous school destroyed by fire in Guilford County, NC
- Insulated precast sandwich panels meeting R-19 minimum, electrical embeds cast into panels, and flat slabs at corridors to maximize clear height for mechanical systems.

Tindall

Better Building Through Technology

WHAT CAN PRECAST MAKE POSSIBLE FOR YOU?

Call 804.861.8447 or email garyschoenfeld@tindallcorp.com

Attend our **SESSION** on July 14 at 12:45pm and visit us at **BOOTH 305**



MEMBER NEWS

Officials at **Smith-Midland Corporation** were recently the recipients of the 2009 ACI Concrete Award in the category of Concrete Buildings/Special for their Jefferson at Inigo's Crossing project. The 10-story, 274-unit Jefferson at Inigo's Crossing, located at 5405 Tuckerman Lane, Rockville, MD, was built with Smith-Midland's SLENDERWALL Architectural Precast Concrete Panel System. The Concrete Awards Program is an annual competition through the National Capital Chapter of the American Concrete Institute. The judging is based primarily on creative, innovative, aesthetic and imaginative use of concrete. Smith-Midland was honored to be a part of the construction team along with owner, JPI Apartment Development; architect, Niles Bolton & Associates; structural engineer, SK & A Structural Engineers; and contractor, JPI Construction, L.P.

W **Wentworth, Inc.** of Chevy Chase, Maryland, was honored with two Silver Dream Home Awards in the categories of Best Kitchen Remodel over \$45,000 and Best Bath Remodel. Dream Home Awards, sponsored by The Wall Street Journal, are presented to those companies and individuals

who assist in creating America's Dream Homes and set new standards of excellence in the Nation's Building Industry. The firm was also recently awarded an Outstanding award by Spaces magazine in their Best of Remodeling Design competition.

Z Every year **ZGF's** Green Team challenges the five ZGF offices to participate in "The Big Green Commute", an interoffice competition that coincides with National Bike to Work Week. Geared with a scoring system that rates different modes of commuting – 4 points for biking or walking; 2 points for using mass transit, a hybrid car, or carpooling; and 0 points for driving to work by themselves – employees are surveyed on their commuting choices to and from work for the week. The offices are then scored based on weighted averages. In addition to reducing carbon footprint, ZGF offices compete for the honor of "The Greenest Commute" award and "The Most Improved Office" award. The coveted Recycled Glass Trophies will reside in Washington DC for 2009, after taking both awards from last year's winner, NYC. This is just one example of ZGF's unwavering dedication to environmental responsibility.



CALENDAR

August 26, 2009

Mentoring Workshop

6:00pm to 7:30pm

AIA | DC Chapter House

1777 Church Street, NW

Washington, DC 20036

www.aiadc.com

Are you in the midst of the Intern Development Program and need some guidance? Taking the licensing exams? Looking for a mentor? Want to hear what other interns and recently-licensed architects are doing? Please attend the monthly Mentoring Workshop and bring your questions and concerns about IDP, the ARE, and other practice issues for this open question and answer session. New interns and mentors welcome!

September 9, 2009

Architecture Uncensored: Griz Dwight, GrizForm Design

6:15pm to 7:15pm

RTKL

2101 L Street NW

Second Floor Lounge and Terrace

Washington, DC 20037

You've got your license...passed the tests and bought the stamp. Now what? How do you decide what's next in your career? Over this four-part lecture series options for answers to these questions will be presented, discussed, and challenged.

Three local young architects tell their stories about how they decided to start their firms, the decisions they made and the lessons learned in the process. You'll hear anecdotes about client development, practice management, and design successes. Starting a practice involved understanding risks and liability, and one evening will be devoted to answering questions about the insurance and legal aspects of starting a practice. A reception follows each presentation. \$10.00 Members. \$12.00 Non-members. Registration also available for the full lecture series: \$30.00 Members. \$40.00 Non-members. Each session will be worth 1.0 LU.

September 10, 2009

The Art of Architecture Auction

6:30pm to 8:30pm

Hickok Cole Architects,

1023 31st St. NW

Washington DC

Earlier this year we sent letters to the world's greatest architects asking them to donate a sketch. Very soon our mailbox was brimming with original works of art from all over the world. You can own a sketch by Antoine Predock, Cesar Pelli or an amazing up and comer like Craig Dykstra of Snohetta. The auction benefits the Washington Architectural Foundation. Greater Washington Board of Trade CEO Jim Dinegar returns as our auctioneer.

Metro: Foggy Bottom, then shuttle to Georgetown \$20.00. Registration required.

Natural Gas. *Efficient by Nature.*

Wondering what buyers and renters really want?



Save your energy.

A recent multifamily housing study indicated that nearly 60% of consumers in the Washington D.C. metro region cite the availability of natural gas as a key driver in their decision to purchase or lease a home.

Consumers are willing to invest in the comfort, convenience, and efficiency of natural gas, and our new installation options make it easy to incorporate it into your next project.

To find out how to bring natural gas to your next project, contact our Engineered Sales professionals at (703) 750-4844 or email engineeredsales@washgas.com.





September 11, 2009

Office Tour

5:00pm to 7:00pm

See the best looking offices in town architects' offices! Five downtown architecture offices open their doors to the public. This self-guided tour begins at VOA at 722 12th Street.

Metro: Metro Center

FREE. Registration required at AIADC.com

September 11, 2009

Weatherization Training

8:30am to 5:00pm

Gensler

2020 K. Street NW Suite 200

Washington DC

September 11th and 12th, 2009 | 8:30 - 5pm

(These are two alternate one-day sessions)

Weatherization training is designed to meet the education needs of industry professionals working to retrofit existing building stock. It focuses on the "low hanging fruit" of energy conservation measures; sealing, caulking, weather stripping, hot water pipe insulation and other fundamental retrofit measures. These techniques are necessary to weatherize over 90% of the housing stock in the DC metro area. Who Should Attend: Weatherization training is geared toward those who are relatively new to the building industry and those wanting to expand their weatherization skills to meet the growing demand. Cost: \$200 (Competitive discounts available for Non-profit org staff and Government personnel)

September 12, 2009

Family Program: Egg Drop Design Competition

10:00am to 11:30am

National Building Museum

401 F Street, NW

Washington DC 20001

www.nbm.org

Join AIA | DC Education Manager Sarah Smith as she and others in the program perform the amazing Egg Drop. What's so amazing? The structures they build will ensure that the eggs don't break even when tossed from the second floor balcony of the museum.

Metro: Judiciary Square

\$7.00 per child, Members. \$10.00 per child, Non-members.

Register children and adults at www.nbm.org.

September 12, 2009

How to Work with an Architect and a Contractor

1:00pm to 3:00pm

AIA | DC Chapter House

1777 Church Street, NW

Washington, DC 20036

www.aiadc.com

Better clients make better houses. Learn the ins and outs of selecting an architect and a contractor. Our session will cover the design and construction process and show you all the

resources you need to find the design and construction team that is right for you.

NWMetro: Dupont Circle FREE. Registration required.

September 12, 2009

CANstruction Build-out

6:00pm to 11:30pm

The Shops at 2000 Penn

2000 Pennsylvania AvenueNW

Metro: Foggy Bottom

Watch teams of architects, engineers, and contractors make giant structures out of canned goods in a six-hour marathon building session. The finished CANstruction sculptures will be on exhibit for two weeks before being dismantled for donation to the Capital Area Food Bank. The public can vote on their favorites throughout the two-week period by donating canned food 'ballots.'

September 13, 2009

Tour of Lincoln's Cottage

2:00pm to 3:00pm

Armed Forces Retirement Home at

Upshur Street and Rock Creek Church Road, NW

Designated a National Monument by President Clinton in 2000, President Lincoln's Cottage served as Lincoln's family residence for a quarter of his presidency and is the most significant historic site directly associated with Lincoln's presidency aside from the White House. The cottage is located on the grounds of the Armed Forces Retirement Home in Northwest Washington, D.C. and has been restored by the National Trust for Historic Preservation. Join AIA | DC's Committee on the Environment for a guided, one-hour tour that offers an in-depth look at Lincoln the man and president.

Metro: Georgia Avenue/Petworth \$15.00. Registration required.

September 13, 2009

Student Design Competition

10:00am to 4:00pm

National Building Museum

401 F Street NW

Washington DC 20001

www.nbm.org

Meet the next generation of Washington architects and watch them at work. Students from local architecture schools are challenged by an intriguing design problem (which remains a closely guarded secret until a week prior to the competition). They will work all day to come up with a solution.

Location: Metro: Judiciary Square FREE. Registration required.



Architecture Week continues until September 21. To learn more about the rest of the week log on to www.aiadc.com

ARCHITECTURE WEEK 2009



MARVIN 
Windows and Doors

Built around you.™

www.marvin.com



Create without compromise.

Marvin Commercial Products and Services allow you to do just that. Need to match the styles of a historic window but want today's state-of-the-art performance? No problem! Our engineering and manufacturing resources, like our in-house Rapid Prototyping, help you see your vision before we build it, allowing you reduce costs and turnaround times.

For more inspiration, Marvin.com/Commercial.

To speak with a Marvin Commercial Representative

1-866-361-4730

architect@lightstyles.com
