

RIGID INSULATION

2" AIR SPACE
RECOMMENDED;
1" MIN. REQ'D FOR
DRAINAGE WALLS

ADJUSTABLE WALL
TIES @ 16" O.C.
VERTICALLY AND 24"
O.C. HORIZONTALLY

BRICK VENEER

MECH. FASTENED
TERMINATION BAR

FOUNDATION

WEEP VENT

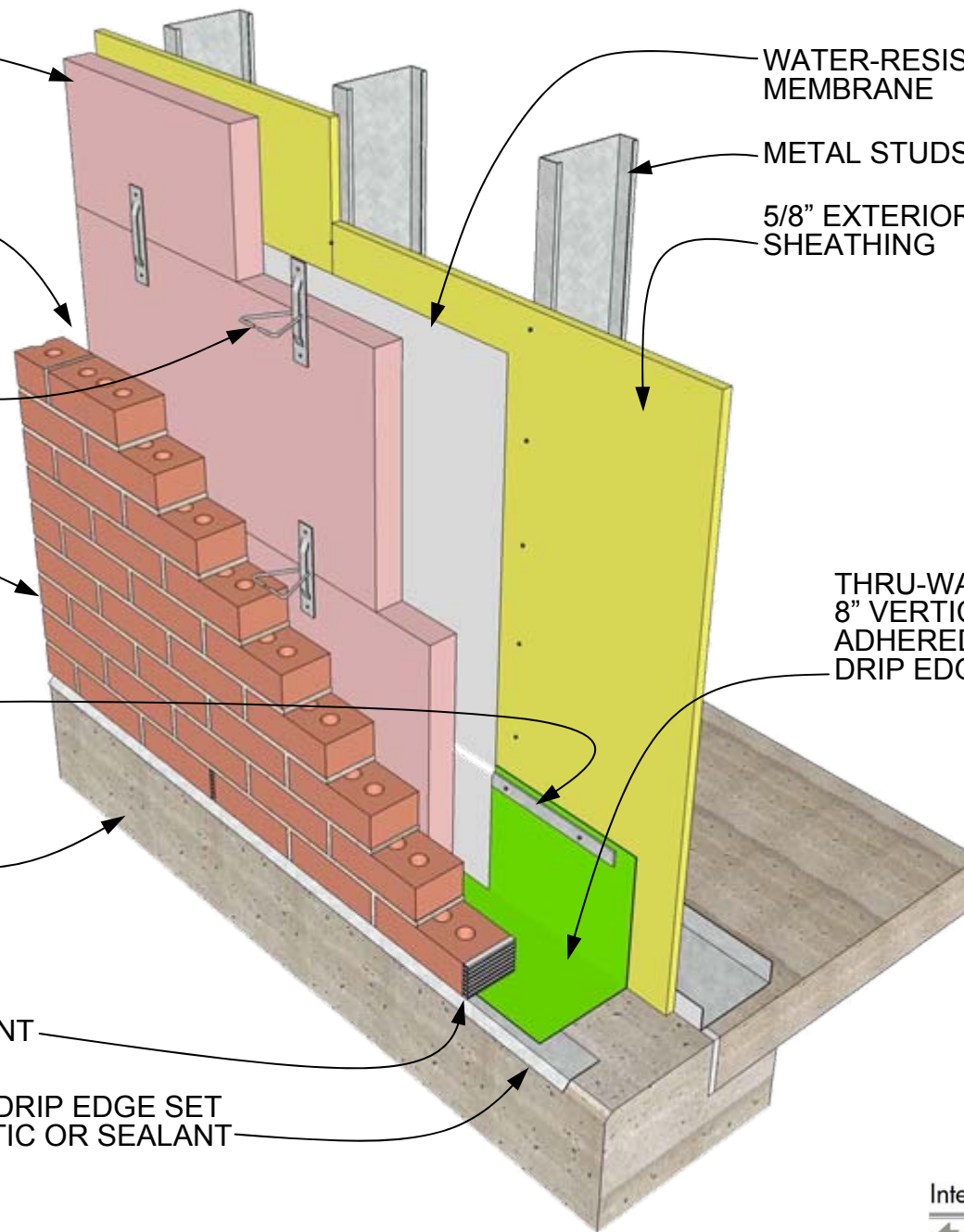
METAL DRIP EDGE SET
IN MASTIC OR SEALANT

WATER-RESISTANT
MEMBRANE

METAL STUDS

5/8" EXTERIOR
SHEATHING

THRU-WALL FLASHING
8" VERTICAL MIN.,
ADHERED TO METAL
DRIP EDGE



BASE OF WALL DETAIL FLEX. FLASHING, DRIP EDGE, TERM. BAR

DETAIL 01.040.0301

REV. 11/06/07

International Masonry Institute



800-IMI-0988 www.imiweb.org

© 2009 INTERNATIONAL MASONRY INSTITUTE